

Woolhope Parish Plan



A vision for the future of our community



**Production of this Plan has been supported by
Herefordshire Council and the Lotteries Board *Awards for All***



Contents

1	What is a Parish Plan?.....	3
2	Background to the Woolhope Parish Plan.....	4
3	The Parish of Woolhope.....	5
4	Summary of Key Issues	9
5	Action Plan.....	15
6	Acknowledgements	19
7	Distribution	19
8	Appendix 1 - Questionnaire “Top Ten”	20
9	Appendix 2 - the Questionnaire and Results in detail.....	21

1 What is a Parish Plan?

A Parish Plan is a comprehensive vision of how the community sees itself developing over the next few years and the action needed to ensure this. Preparation of a Parish Plan is an opportunity for everyone in the community to say how they want their community to develop.

Parish Planning is part of an initiative by the Countryside Agency which is aimed at helping small, rural communities in the following ways:

- to ensure local people have a voice in their future
- to take stock of their parish and villages
- to identify what they need to preserve locally
- to identify improvements required locally
- to provide support in implementing changes

As many people as possible have been encouraged to contribute to the debate and consultation that has resulted in this document.



2 Background to the Woolhope Parish Plan

In August 2004, following a public meeting held in Woolhope Parish hall, a Parish Plan Steering Group was formed to start the process rolling. The Steering Group was not run by the Parish Council but by members of the community on a voluntary basis. It was believed that the whole process would be more open, and result in parishioners' views being more accurately reflected, if there was minimum bureaucracy. Notwithstanding, the Parish Council were always represented on the group and made a valuable contribution to the consultation process.

Meetings of the Steering Group were held at regular intervals (third Thursday of every month) and were open to all parishioners. The group initially spent time finding out as much as they could about a range of subjects in order to present the information to parishioners at the second public event, the *Planning for Real* day, held on the weekend of 14th/15th May 2005.

That was an opportunity for everyone in the parish to get together in the Parish Hall to discuss how they feel the parish should move forward over the next 5-10 years. Using a giant sized map of Woolhope, parishioners were able to indicate where and what they feel should or should not happen in the future of the parish. Issues raised fell mainly into four areas:

1. Leisure, Health & Social
2. Environment
3. Highways
4. Development

The next part of the exercise was to continue the process of collecting the opinions of as many people as possible. The Steering Group was split into four smaller working parties to be responsible for the four areas of interest identified above and they then worked to consolidate all the issues into a questionnaire. This was duly prepared for distribution in February 2006 to all parishioners to ensure that everyone had a chance to consider every issue raised at the *Planning For Real* weekend and to have their say on those issues, whether they were able to attend or not. Responses to the questionnaire were collated and full results were distributed to every household in the parish in June 2006.

Results from every returned questionnaire, including any additional comments made, were further analysed by the four working parties and the outcome of that analysis converted into the action Plan which forms part of this document.

Finally, out of the whole process, this Parish Plan document has been prepared by the Steering Group to reflect the majority view of Woolhope parishioners. It includes a series of actions and recommendations and formally sets out a vision for the future of our community.

3 The Parish of Woolhope

The parish of Woolhope is in an Area of Outstanding Natural Beauty (AONB) in the county of Herefordshire and lies 8 miles to the south-east of county town Hereford, 8 miles west of Ledbury and 9 miles north of Ross-on-Wye. It stretches from Hazel Court in the north to Upper Buckenhill in the south and from Rudge Wood in the west to Underhill in the east.

In Saxon times this was the land of Wulviva, sister of the more famous Lady Godiva to whom reference is made in a stained glass window in the parish church.



There are no main 'A' roads in the parish and the only 'B' road (B4224) just touches the southern boundary at Upper Buckenhill for about half a mile. Provision of public transport is limited to a bus service.

The population of the parish numbers approximately 460 people living in around 192 households and, according to the last census in 2001, approximately 20% are less than 16 years old, 60% are between 16 and 60 years of age and 20 % are older than 60.

It is a rural parish with some 20% of those in employment working in agriculture or related activities. Around 15% work in manufacturing and a further 15% work in wholesale or retail trades. Most employment is provided out of the parish and approximately 65% of those in work use a car or van to travel to their workplace.

The village of Woolhope, which sits almost in the centre of the parish, includes two public houses (The Crown Inn and The Butchers Arms) and the parish church of St George but there is no longer a village shop (the nearest is at Fownhope). There is a small Post Office open for a limited number of hours each week in the Parish Hall.

Woolhope Parish Plan

A wide variety of activities for parishioners and visitors alike is supported by the Parish Hall which was built as a replacement for an ageing building in 1999/2000 with considerable support and input from local people.

The new hall is situated in Woolhope village alongside the recreation field and tennis courts. Village sports clubs regularly play cricket, football, tennis, table tennis and short mat bowls and there are a number of active organisations such as the Woolhope Amateur Dramatics Society, Women's Institute, Young Farmers Club and the Gardening Club. Social events such as Quiz Nights, Pudding Parties, Bingo and visiting drama and singing groups are regularly held in the hall and it also has all the facilities to host wedding and other celebration events.



The hall and recreation field also host the annual Woolhope Family Fete and Horticultural Show which enjoy support from a large number of people from many surrounding areas.

The natural importance of the area is highlighted by the Woolhope Dome project which is one of three pilot Biodiversity Enhancement Area (BEA) projects in the West Midlands. It has been running since July 2003, and is the first project of its kind in Herefordshire. The Woolhope Dome is an upland Area of Outstanding Natural Beauty, rich in wildlife and crossed by many public footpaths and bridleways. Several long distance walks pass close to Woolhope, among them the Three Choirs Way and the Wye Valley Walk. The River Wye itself flows within three miles of the village.



The aim of the Woolhope Dome project is to undertake nature conservation work to enhance biodiversity gain on a large area scale. The project looks at protecting existing high value areas by the introduction of suitable habitat management, and then developing links and corridors to join these prime habitat areas, allowing species to move and spread. The overall aim is to work with local communities to protect and enhance the biodiversity of the habitats within the Dome's landscape, and to use it as an example of best practice in other areas with similar high biodiversity value.

Alongside the very practical side of the project, it hopes to promote local produce (particularly that of rare breeds) and bring together producers, suppliers and consumers. A further aim is to co-ordinate landowners, managers and contractors, all to improve the local economy.



Our Parish



4 Summary of Key Issues

The Parish Plan Questionnaire was delivered by hand to every adult in the parish (392 copies in all) during the last two weeks of February 2006. Plain envelopes were provided for their return to ensure confidentiality. Although completed by adults, the views of younger people were also encouraged.

296 completed questionnaires were returned which represents a very creditable 75% response.

The overriding message from this process was that the vast majority of people living in the parish of Woolhope want to retain and protect the existing rural character of their environment.

Many items got a mixed response “For” and “Against” but there were a number of issues where a large vote indicated their importance to parishioners. (Figures shown below represent the percentage of those who responded to the questionnaire.)

Leisure, Health and Social Issues

1. 54% would like to see improved access to footpaths.
2. 61% would like to see an “off road” bridleway round the parish.
3. Many people want additional facilities at the Parish Hall - e.g. 73% in favour of evening classes and 58% in favour of an Arts & Crafts club.
4. Facilities for younger parishioners such as a Youth Club (77% in favour) and Basket Ball (62% in favour) but a definite 61% No to regular discos.
5. More equipment in the children’s play area - 70% for a climbing frame, 69% for a roundabout, 76% for a baby swing and 75% for a see-saw.
6. 75% would like to see local delivery of medical prescriptions.
7. 61% in favour of co-ordinated supermarket deliveries to save fuel and staff costs and reduce pollution.
8. 70% were against twinning with another village in Europe
9. 74% would like to see regular film shows in the Parish Hall

Environment Issues

1. Provision of a local organic farm shop met with approval from 77%.
2. A community vegetable garden and compost scheme did not receive a majority vote (52% and 69% against respectively).
3. Although the majority (57%) use the existing Post Office facilities at the Parish Hall, there was no great call for longer hours (56% against) or extended services (76% against).
4. Recycling facilities are currently used by 92% and 84% want additional facilities for cardboard.
5. The majority (74%) are in favour of adopting sustainable energy strategies that will help to reduce harmful emissions in an effort to slow climate change.
6. 60% would be in favour of a Wind Turbine installed locally and 71% would consider switching electricity supply to a green tariff.
7. If bio-diesel was readily available 70% would consider using it for their cars; and 78% would use bio-oil or local fuel to heat their homes.

8. Dog litter bins were much in demand - 85% in favour of bins being sited on Berryfield and 72% at Haugh Wood.
9. A large majority want to ensure there is no change in the very low levels of environmental pollution that exist at present with only between 4% and 17% being currently adversely affected.
10. Continuing provision of public telephones received a lot of support - 85% "For" the one at The Nurdens, 96% "For" the one at The Crown (and 82% think that should be a traditional red box) and 75% in favour of the provision of a public phone at the Parish Hall.
11. Support would be given by 75% for provision of additional and better designed community litter bins; and 84% would like to see a village notice board outside the Parish Hall in addition to the existing boards on Broadmoor Common, at The Nurdens and opposite The Crown Inn.
12. The various aims of the Woolhope Dome Project in relation to our natural environment was supported by between 84% and 95%. However, the number prepared to take an active part in carrying out those aims was only 44%.



Highways Issues

1. 74% were in favour of the Parish Council employing someone to maintain ditches and drains and repair potholes.
2. Most respondents were against the provision of hard standing by the letterbox on Broadmoor Common (63%), against street lighting in the village (83%) and against decorative signs for the village (63%). Most were also against Resident Only parking by The Crown (69%) but agreed that some form of restriction would be useful.
3. Traffic calming by means of humps or coloured tarmac did not meet with approval (90% and 81% against respectively) and a smaller majority were also against speed restriction signs (51% against) and solar powered warning signs (66%). However, Road Narrows signs were supported by 57%.
4. Winter salting and gritting by Herefordshire Council of the Fownhope road (the easiest route to the main road) was deemed essential by 92%. Extension of that service to parish main roads was supported by 71% but only 54% thought this should be extended to all roads in the parish. 84% thought existing DIY salt bins were in the best places.
5. Most respondents (72%) were satisfied with existing bus services.



Development Issues

1. Although the majority of parishioners voted in favour of having some further housing in the parish, 93% were against any major development but 65% would be in favour of infill development of a limited nature. The conversion of redundant buildings was the most popular option (84% in favour) with realistically priced starter homes also in favour by a small majority (53%). Affordable rented housing was only seen as desirable by a minority of 43%.
2. Parishioners voted against any further greenfield development by rejecting suggestions of building on The Glebe Meadow (64% against), The Avenue (75% against), Broadmoor Common (86% against) and any other place (71% against).
3. 69% believe that there is no distinctive style to the local architecture.
4. Improvement of the existing sewerage plant to reduce smells and improve drainage was supported by 73% but development of a further plant was rejected by a small majority of 51%.
5. Most people (63%) felt that there should be some industrial development in the parish but that this should be focused on cottage industry (73% for) and small-scale workshops (53% for). 82% were against any light industry.
6. Tourism for walkers, cyclists and naturalists should be encouraged (83% in favour) but a clear majority of 91% were against tourism for motorists and coach parties.



As well as asking specific Yes/No questions, the questionnaire offered the opportunity for respondents to make more general comments, particularly in respect of development issues. The following represents the most common sentiments expressed in those comments.



- Woolhope is a rural area - please don't try to urbanise it.
- Our parish has some of the most beautiful views in the County.
- Parishioners' comments about proposed building work have been ignored or overridden in the past by the planning authorities.
- Parishioners have a responsibility to help youngsters stay in the parish, but only if they wish to stay.
- Low cost starter homes may be required but any that are provided should be maintained long term for local people.
- Provision of a better bus service would encourage people to leave their cars at home.
- The road infrastructure in the parish will not readily support additional traffic caused by extra housing, light industry or tourism.



Towards Marcle Ridge

5 Action Plan

The objectives stated in this plan reflect the majority view of the parishioners of Woolhope and are based on the results of the Parish Plan Questionnaire and other related research and consultation.

Topic	Objective	Actions	Responsibility	Timescale
Leisure Health and Social Issues				
Footpaths	To improve access and enjoyment of walkers, dogs and horse riders when using the footpaths and bridleways in the Parish	<ul style="list-style-type: none"> • Provide Gates instead of stiles and dog flaps in stiles wherever possible. • Re-establish closed footpaths through Devereux Park and a bridleway round the Parish. 	Woolhope Parish Council, Council Footpath Warden and local landowners	Soon
Seat on Broadmoor Common	To provide a seat for the benefit of visitors and residents	<ul style="list-style-type: none"> • Opportunity for fund raising or donation. Ensure the necessary permission is obtained from Authorities 	Members of the Community	In the future
Clubs and organisations	Art, Technology and Educational Classes to fulfil a need as highlighted	<ul style="list-style-type: none"> • Any interested party to develop an appropriate group. • Consider running Evening Classes in the Parish Hall. 	Volunteers from the Community. Herefordshire Council	In the future In the future
Facilities for younger parishioners	To provide the youth of the Parish with a Youth Club and somewhere to play Basketball; and facilities for developing other skills.	<ul style="list-style-type: none"> • In conjunction with the previous item there is an opportunity for members of the community to develop a youth club for recreation and development of special interests. 	Members of the Community – Volunteers required	In the future
Children's Play Area	To improve facilities in the Children's' play area by the provision of additional equipment	<ul style="list-style-type: none"> • Fund raising by interested groups in order to purchase additional equipment, in conjunction with possible funding from Parish Funds if appropriate 	Members of the Community and Parish Council	Soon

Woolhope Parish Plan

Topic	Objective	Actions	Responsibility	Timescale
Medical Prescriptions	To organise a delivery service for those unable to travel to the doctors surgery to collect prescriptions	<ul style="list-style-type: none"> • Consultation with the Doctor's Surgery, the Local Council and any other relevant body. 	Primary Care Trust	Now
Flicks in the Sticks	To provide regular visits by the Flicks in the Sticks for the benefit of the Parishioners, showing a selection of suitable films	<ul style="list-style-type: none"> • Consultation with the organisers of Flicks in the Sticks to obtain membership. 	Parish Hall Committee	Soon
Environment Issues				
Recycling	To maintain and expand existing facilities	<ul style="list-style-type: none"> • Provide additional facility for recycling cardboard. 	Woolhope Parish Council	Now
Woolhope Dome Project	To encourage local participation in the project.	<ul style="list-style-type: none"> • Contact Woolhope Dome Project Team and co-ordinate assistance from willing parishioners. 	Woolhope Parish Council	Now
Telephones	To maintain and expand existing facilities.	<ul style="list-style-type: none"> • Contact British Telecom to investigate the possibility of them supplying an additional public phone at the village hall. • Contact British Telecom about converting existing phone booths in the parish to old style red boxes. (It is understood that responsibility for maintenance and repair of red phone boxes would rest with the parish.) 	Woolhope Parish Council	Soon
Dog Litter Bins	To provide additional bins	<ul style="list-style-type: none"> • Confirm appropriate sites and provide bins. 	Woolhope Parish Council	Soon
Sustainable Energy	To encourage use of sustainable energy whenever possible	<ul style="list-style-type: none"> • Arrange one or more seminars to inform parishioners about available facilities and advice. 	Herefordshire Council	Soon

Woolhope Parish Plan

Topic	Objective	Actions	Responsibility	Timescale
Community Information	Provide additional Notice Board outside the Parish Hall	<ul style="list-style-type: none"> Assess best site and obtain costs. 	Woolhope Parish Hall Committee	Soon
Nature Reserves	To provide environment information	<ul style="list-style-type: none"> Approach Herefordshire Nature Trust for relevant information 	Parish Plan Steering Group	Soon
Litter Bins	Provide additional bins	<ul style="list-style-type: none"> Assess best site(s) and costs 	Woolhope Parish Council	Soon
Highways Issues				
Road & Verge Maintenance	To maintain roads, verges and ditches, to fill potholes and to clear gully gratings	<ul style="list-style-type: none"> Employ Lengthsman (either Full- or Part-time) 	Woolhope Parish Council	Spring 2007
Salting & Gritting	To ensure that main roads in the parish are gritted when severe icy weather is forecast and to ensure that salt bins are maintained on all roads in the Parish	<ul style="list-style-type: none"> Liaise with Herefordshire Council Highways Division. Use Lengthsman in salting hazardous bends and gradients as necessary. Site and maintain salt bins 	Herefordshire Council Highways Division and Woolhope Parish Council	As necessary commencing Autumn 2006
Traffic Calming	To control the speed of vehicles throughout the parish, particularly where children, pedestrians or horse riders may be road users	<ul style="list-style-type: none"> Employ signs, introduced at intervals to monitor effectiveness. 	Herefordshire Council Highways Division and the Police	commencing Spring 2007
Car Parking	To control parking (except for residents) in centre of village. Provide non-intrusive car parking at scenic view points.	<ul style="list-style-type: none"> Employ signs and road markings. 	Herefordshire Council and Woolhope Parish Council	Spring 2007
Development Issues				
Housing	If a need for additional housing is established, to ensure natural infill and conversion of redundant buildings rather than new development.	<ul style="list-style-type: none"> Inform Woolhope Parish Council of parishioners' wishes and needs in this respect as identified in the results of the Parish Plan Questionnaire. 	Parish Plan Steering Group.	Now

Woolhope Parish Plan

Topic	Objective	Actions	Responsibility	Timescale
	To ensure on-going defence of parishioners' views.	<ul style="list-style-type: none"> • Engage with Herefordshire Council to robustly defend the views of parishioners. These include: • No further green field development • Development to be limited to conversion of redundant buildings • Schemes to build affordable rented housing are to be discouraged • Schemes to build realistically priced starter homes are to be encouraged as long as the development is of a "limited infill" nature • No building on the Glebe, The Avenue or Broadmoor Common. • Welsh Water to be lobbied to improve the existing plant to reduce smells and improve drainage • No light industry to be permitted in Woolhope Parish but Cottage and small-scale workshops to be encouraged • Tourism for motorists or coach parties to be discouraged but schemes to improve tourism for walkers, cyclists and naturalists to be encouraged. 	Woolhope Parish Council	On-going.

6 Acknowledgements

Putting some of the plan's recommendations into action may well require additional funding. We are therefore particularly grateful to the following for their support and financial input which has allowed us to get to this stage of our Parish Plan process without having to ask the Parish Council or parishioners for donations.

- Herefordshire Council for approving a grant of up to £1,000 out of their Small Projects Fund.
- The Lotteries Board *Awards for All* for approving a grant of £2,519.
- The Herefordshire Rural Community Council for providing valuable input and support, particularly at the beginning of the process.
- Community First for advice and support in the latter stages of the process.
- The dedicated people (too many to mention individually) who took part in the Steering Group activities.

We also gratefully acknowledge the support given by all those parishioners who attended the *Planning for Real* day and those who took the time to complete the Parish Plan Questionnaire. Without that valuable input there would be no Parish Plan.

7 Distribution

It is intended to make the completed Parish Plan available to the following:

- All Woolhope parishioners
- Woolhope Parish Council
- Herefordshire Council



8 Appendix 1 - Questionnaire “Top Ten” (Originally published in May 2006)

392 questionnaires were delivered earlier this year and 296 were returned - that’s just over 75% which is a great result. Thank you everyone who took the time to complete it.

The results are being analysed and will be published in full in due course but here are details of the Top Ten “Yes” and “No” answers. Meanwhile the Parish Plan Steering Group is working on drafting the Parish Plan itself which will reflect how you, the parishioners, want to see our community develop over the next few years.

The tables below show the original question number, an abbreviated form of the question and the percentage (of those who responded) who voted Yes or No.

Top Ten “Yes”

20.2	Retain public telephone at centre of Woolhope (by the Crown)	91%
22.1	Support for Woolhope Dome Project to protect wildlife habitats etc.	88%
16.1	Currently, or intend in the future to, make use of recycling facilities	88%
27.3	Regular gritting on the Fownhope road in winter	83%
18.2	Dog litter bins on Berryfield	79%
22.2	Support for Woolhope Dome Project to create links between wildlife habitats	78%
16.2	Additional recycling facility at the Parish Hall for cardboard	77%
21.4	Information/notice board outside the Parish Hall	77%
29.6	Conversion of redundant buildings to provide additional housing	77%
22.3	Support for Woolhope Dome Project to provide help to landowners/farmers	76%

Top Ten “No”

19.2	Adversely affected by waterborne pollutants	85%
26.1	Traffic calming humps	82%
29.3	Should there be major development of housing in the parish	82%
19.4	Adversely affected by light pollution	81%
19.1	Adversely affected by airborne pollutants	76%
24.2	Street lighting in village centre and at The Nurdens	76%
19.3	Adversely affected by noise pollution	75%
33.3	Tourism for motorists and coach parties	75%
26.2	Traffic calming coloured tarmac	74%
29.9	New housing on Broadmoor Common	71%

Don’t forget, all parishioners are welcome to come along to the Parish Plan Steering Group meetings which are held on the third Thursday each month at 7.30 pm in the Parish Hall.

9 Appendix 2 - the Questionnaire and Results in detail

Results Update

June 2006

A total of 392 questionnaires were issued to households in the Parish of Woolhope and 296 were returned. This represents just over 75% which is an excellent response and can be considered a valid assessment of what parishioners want.

In the following pages we have reproduced the questions exactly as they were and have recorded against each how many Yes and No votes were cast. We have also noted the number where no response was made.

Thank you to all those who made additional comments on the questionnaire. These have all been recorded and will be taken into account when the results are being analysed.

The Parish Plan Steering Committee is now in the process of constructing a draft plan based on the questionnaire results. The original sub-groups for Leisure, Highways, Environment and Development are being reconvened to identify the key issues where responses to the questionnaire show overriding feelings about a subject. Those issues will then be sub-divided into "Now", "Soon" and "Later" priorities for action.

Once a draft Parish Plan has been prepared from these key issues, it will be presented to the community for discussion and consultation. Finally an Action Plan will be constructed detailing who should be approached to actually put things in motion by obtaining suitable funding and other resources. This could be the Parish Council, Hereford Council, charities, private groups or individuals.

As an incentive to complete the questionnaire, the Parish Plan Steering Group offered £25 in a prize draw. For those who have not seen the result, the winning number was 26 and was drawn at the Annual Parish meeting on 26th April 2006. The prize has been claimed.

The questionnaire was produced in order to ensure that all parishioners had a chance to have their say on issues which affect them. Thank you again for your participation.

If you feel strongly about any of the issues raised in the questionnaire or about how the Parish Plan is being constructed, please feel free to come to the next Steering Group meeting and air your views. These meetings are open to all parishioners and are held on the third Thursday each month at 7.30 pm in the Parish Hall.

We also plan to have a stall at the annual Family Fete and this will be another opportunity for you to express your opinions and discuss the Parish Plan process with members of the Steering Group. Make a note now - Bank Holiday Monday, 28th August 2006 on Berryfield.

Leisure, Health and Social Issues



		✓ Yes	✗ No	No Response
1	Footpaths			
	Which of the following would you like to see provided:			
	1.1 Gates instead of stiles to make some footpaths more accessible?	145	122	29
	1.2 Dog flaps in footpath stiles to make walking with dogs easier?	154	110	32
	1.3 A footpath through Devereux Park (Park Pools) linking Bent Orchard Farm with Park Farm?	144	92	60
	1.4 An 'off road' bridleway round the parish?	153	96	47
2	Broadmoor Common			
	2.1 Do you think that a seat on Broadmoor common would be a good idea?	188	87	21
3	Cycling			
	3.1 Would you like to have a cycle route/footpath from Broadmoor Common to The Nurdens?	132	133	31
4	Clubs and Organisations			
	There are currently over 15 clubs and organisations in the parish. Which of the following additional activities or facilities would you like to see provided:			
	4.1 Computer access in the Parish Hall?	120	108	68
	4.2 An Arts & crafts club?	134	96	66
	4.3 Evening classes?	183	68	45

		✓ Yes	✗ No	No Response
5	Berryfield			
	Which of the following additional sporting facilities would you like to see provided:			
	5.1 A Badminton court?	101	138	57
	5.2 A Swimming pool?	80	171	45
	5.3 Would you be prepared to take an active part in fund raising to finance such projects?	83	166	47
6	Facilities for younger parishioners			
	Would you like to see provided:			
	6.1 A Youth Club?	196	59	41
	6.2 Regular Discos?	87	135	74
	6.3 A pool table?	119	109	68
	6.4 Basketball facilities?	145	90	61
7	Children's play area			
	Would you like to see the following equipment added:			
	7.1 Climbing frame?	156	67	73
	7.2 Roundabout?	152	69	75
	7.3 Baby swing?	164	53	79
	7.4 Twirley slide?	138	78	80
	7.5 See-saw?	168	56	72
8	Attracting visitors to the parish			
	Would you like to see the following provided:			
	8.1 An animal farm?	86	159	51
	8.2 More B&B facilities?	125	123	48
9	Haugh Woods			
	Do you think we should have the following additional facilities there:			

Woolhope Parish Plan

		✓ Yes	✗ No	No Response
9.1	Mountain bike trail?	131	138	27
9.2	An assault Course?	89	173	34
10	Medical prescriptions			
10.1	Would you like to see local delivery of prescriptions from the Doctors' surgery?	201	68	27
11	Supermarket deliveries			
11.1	Would you like to see the co-ordination of supermarket delivery days to reduce pollution and staff costs and so save fuel?	164	103	29
12	Twinning			
12.1	Would you like to see the parish twinned with another in the UK or in Europe?	79	185	32
13	"Flicks in the Sticks"			
13.1	Would you like to see regular film shows provided in the Parish Hall?	201	69	26

Environment Issues



		✓ Yes	✗ No	No Response
14	Community Facilities			
	Would you use the following if they were available:			
	14.1 Organic farm shop for provision of meat, vegetables and other local products?	200	61	35
	14.2 Local venison provided by deer control?	128	130	38
	14.3 Community compost scheme?	121	133	42
	14.4 Community vegetable garden?	77	172	47
	14.5 Mains gas?	118	144	34
	14.6 Car sharing scheme for work or school?	112	135	49
15	Post Office			
	Woolhope Post Office at the Parish Hall is currently open on Monday afternoon and Thursday morning each week.			
	15.1 Do you currently, or intend in the future to, make use of the facilities?	156	116	24
	15.2 Would you like to see the facilities available more frequently?	104	134	58
	15.3 Would you like to see more services offered? If, so please identify them below:	47	149	100
16	Recycling Facilities			
	Facilities are currently available at the Parish Hall to recycle bottles, plastics, cans and paper.			
	16.1 Do you currently, or intend in the future, to make use of the facilities?	259	22	15
	16.2 Would you like an additional facility for cardboard?	228	43	25

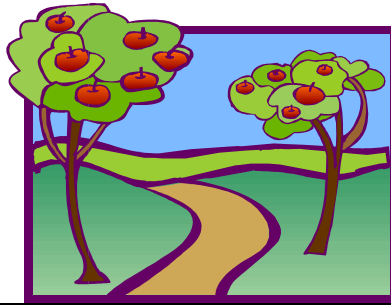
	✓ Yes	✗ No	No Response
17 Sustainable Energy			
According to a survey conducted by Mr K McGowan in March 2005 (see page 12 for details) Woolhope Parish exceeds the national average for carbon dioxide emissions.			
17.1 Considering the current debate concerning climate change, do you think Woolhope should set an example and try to reduce its emissions ahead of Government targets?	188	66	42
17.2 Would you agree to the erection of a Wind Turbine of no more than 30 to 50 metres high in the parish?	162	107	27
17.3 Would you be interested in receiving advice to help maximise the energy efficiency of your home?	142	121	33
17.4 Would you consider switching your electricity supply to a green tariff?	174	72	50
17.5 Would you consider using bio-diesel, produced from waste oil or local crops, for your vehicle?	181	78	37
17.6 Would you consider using bio-oil or local wood fuel (logs, chips or pellets) to heat your home?	203	57	36
18 Animals in the parish			
Should dog litter bins be provided:			
18.1 in Haugh Wood?	194	74	28
18.2 on Berryfield?	233	41	22
18.3 on all footpaths in the parish?	151	115	30
19 Pollution of the environment			
Are you adversely affected by any of the following:			
19.1 Airborne pollutants?	42	225	29
19.2 Waterborne pollutants?	11	253	32
19.3 Noise pollution?	44	222	30
19.4 Light pollution?	21	241	34
If affected, please state what and where			
.....			

		✓ Yes	✗ No	No Response
.....				
20	Public Telephones			
	20.1 Should a public telephone continue to be sited at The Nurdens/Winslow Mill?	225	40	31
	20.2 Should a public telephone continue to be sited at the centre of Woolhope village (by The Crown)?	268	12	16
	20.3 As we are in a Conservation Area, should the village centre telephone box be a traditional red one?	225	50	21
	20.4 Should a public telephone be made available at the Parish Hall?	200	68	28
21	Additional Facilities			
	Would you support:			
	21.1 Additional and better designed community litter bins?	194	68	34
	21.2 Nature reserves with environmental information?	201	59	36
	21.3 A community green on the Glebe?	116	114	66
	21.4 An information/notice board outside the Parish Hall?	228	42	26
22	The Natural Environment			
	The Woolhope Dome Project was set up to protect the area's special landscape and wildlife habitats, providing grants, information and training.			
	Do you support the Project's aims:			
	22.1 to protect, improve and restore valuable wildlife habitats such as wildflower meadows, ancient woodland, hedgerows, streams and old orchards?	260	13	23
	22.2 to create new links between existing wildlife habitats?	231	30	35
	22.3 to provide help and advice to landowners and farmers wishing to take up environmental grant schemes such as Environmental Stewardship?	226	34	36
	22.4 to encourage environmentally friendly local enterprise			

Woolhope Parish Plan

	✓ Yes	✗ No	No Response
such as organic farming and charcoal production and sustainable tourism?	218	43	35
22.5 Would you like to take part in a hands-on project to promote any of the above objectives?	113	144	39

Highways Issues



	✓ Yes	✗ No	No Response
23 Road Maintenance			
23.1 Do you think the Parish Council should employ someone to maintain ditches and drains and repair potholes?	210	72	14
24 Highways and Byways			
Do you think the following should be provided:			
24.1 Vehicle hard standing by the letterbox on Broadmoor Common?	96	163	37
24.2 Street lighting in the village centre and at The Nurdens?	46	224	26
24.3 Painted “Resident Parking Only” lines by The Crown?	80	180	36
24.4 Decorative signs for the village?	100	169	27
25 Tourism			
25.1 Would you like to have additional, non-intrusive, car parking and picnic/scenic viewing areas similar to Ridge Park at Much Marcle?	130	135	31
26 Traffic Calming Measures			
Do you think the following traffic calming measures should be provided in the parish:			
26.1 Humps?	28	244	24
26.2 Coloured tarmac?	50	220	26
26.3 Fixed speed restriction signs?	133	141	22
26.4 Solar powered warning signs?	91	179	26
26.5 “Road Narrows” signs?	159	122	15

	✓ Yes	✗ No	No Response
27 Salting and Gritting			
When severe icy weather is forecast, do you think salting and gritting should be carried out by Herefordshire Council lorries:	178	72	46
27.1 on parish main roads only?	141	120	35
27.2 on all roads in the parish?			
27.3 Do you think there should be regular gritting on the Fownhope Road in winter to maintain the easiest route to the main road?	246	22	28
27.4 Are you in favour of DIY salting by drivers from roadside bins?	182	79	35
27.5 Are the current salt bin sites in the best places? If not, please identify where they should be	179	33	84
28 Buses			
28.1 Are you satisfied with the current bus service to and from Woolhope?	163	63	70
28.2 Would you use the bus more if it went to Ledbury and Ross?	76	146	74
28.3 Do you want a bus service from Hereford on Saturday night?	74	143	79
28.4 Do you want a bus service from Hereford on other nights? If so, please specify:	23	183	90
If you are a car user, as fuel gets more expensive would you consider:			
28.5 Car sharing?	111	131	54

	✓ Yes	✗ No	No Response
28.6 Using a community bus?	113	129	54
28.7 Using the existing bus service?	142	114	40

Development Issues



	✓ Yes	✗ No	No Response
29 Housing development			
In general, do you think there should be:			
29.1 No more housing in the parish?	112	139	45
29.2 Limited infill development in the parish?	171	93	32
29.3 Major development of housing in the parish?	18	244	34
Would you be in favour of:			
29.4 Development of realistically priced starter homes?	142	127	27
29.5 Development of affordable, rented housing?	109	145	42
29.6 Conversion of redundant buildings?	227	42	27
If a need for new housing was established in the parish, should the following locations be considered?			
29.7 The Glebe Meadow?	84	147	65
29.8 The Avenue?	56	165	75
29.9 Broadmoor Common?	34	211	51
29.10 Other?	43	106	147
Please specify.....			
.....			
30 Housing style			
30.1 Do you feel that properties in Woolhope Parish have a recognisable architectural style which is locally distinctive?	84	187	25

	✓ Yes	✗ No	No Response
31 Sewerage			
Welsh Water advise that the existing sewerage plant is up to capacity and cannot be expanded.			
31.1 Would you like to see the existing plant improved to reduce smells and improve drainage?	180	66	50
31.2 would you like to see an additional plant provided at another site to serve existing properties that are not currently connected to the main sewer and/or to serve new housing?	121	125	50
32 Industrial Development			
What sort of industrial development should be permitted in Woolhope Parish?			
32.1 None at all?	86	147	63
32.2 Cottage industries?	190	70	36
32.3 Small-scale workshops?	132	117	47
32.4 Light industry?	43	197	56
33 Tourism development			
What sort of tourism should be encouraged in Woolhope Parish?			
33.1 None at all?	54	156	86
33.2 Tourism for walkers, cyclists and naturalists?	214	45	37
33.3 Tourism for motorists and coach parties?	23	222	51
34 General			
34.1 Please use the space below to make any additional remarks concerning any of the above questions in this section on Development.			
.....			
.....			



The Church & Old School House from Berryfield

**Production of this Plan has been supported by
Herefordshire Council and the Lotteries Board *Awards for All***

